

ISCMC-2002

*Second Circular &  
Registration Form*

**The Third International Symposium  
for Chinese Medicinal Chemists**

**第三屆世界華人藥物化學討論會**



**The Hong Kong University of  
Science and Technology**

**28-31 Dec 2002, Hong Kong**

## Introduction

The International Symposium for Chinese Medicinal Chemists (ISCMC) is held in every two years with the objective to provide a unique platform for exchanging scientific results and enhancing communication among the medicinal chemists in the Chinese Mainland, Taiwan, Hong Kong and overseas. The first and second symposia of ISCMC were held successfully in Taipei (July 19-23, 1998) and Chengdu (October 15-19, 2000). The Hong Kong University of Science and Technology (HKUST), together with colleagues of other tertiary institutions in Hong Kong, is honored to host the third symposium of this series in 2002.

You are cordially invited to participate in *The Third International Symposium for Chinese Medicinal Chemists (ISCMC-2002)*, which will be held on the campus of HKUST during 28-31, December 2002. The symposium aims to provide an excellent opportunity for exchanging innovative ideas and latest development among participants. The symposium promises a wealth of outstanding science in all aspects of medicinal chemistry with special focus on the studies of novel approaches to drug discovery and development, including bioinformatics, virtual screening, combinatorial chemistry, chirotechnology, and TCM related research.

The Hong Kong University of Science and Technology (HKUST) provides modern lecture theaters equipped with the state-of-art audio and video facilities. All symposium sessions will be held in air-conditioned venues. All delegates are expected to live in the hotel-like guest rooms in Visitor Center in Tower II and the serviced apartments in University Center, Tower C at discounted room rates. Rooms in student halls with shared facilities are also provided.

Hong Kong is one of the world's most interesting and unique cities. Optional tours within Hong Kong will be arranged for interested delegates and accompanying persons. Assistance will be provided for delegates to explore Hong Kong and the adjacent cities in the Chinese Mainland before and after the symposium.

Graduate students are particularly encouraged to attend the symposium. Reduced registration fees are available to all bona fide student participants. All sports and recreational facilities on the campus including indoor swimming pool, sports hall, fitness center, seafront basketball court, a 400-meter athletic track, and an all-weather AstroTurf soccer pitch etc. are available to delegates. Sports activities can be arranged for interesting participants upon request. The HKUST campus is a popular touring spot in Hong Kong. The beautiful scenic setting and various commercial outlets available on the campus ensure your stay during the symposium an enjoyable and memorable experience.

---

## Conference Organization

### International Advisory Board

Prof. Albert S. C. Chan  
(The Hong Kong Polytechnic University)  
Prof. Kai-Xian Chen  
(Shanghai Institute of Materia Medica, CAS)  
Prof. Ji-Wang Chern  
(National Taiwan University)  
Prof. Zong-Ru Guo  
(Institute of Materia Medica, CAMS)  
Prof. Kuo-Hsiung Lee  
(University of North Carolina, Chapel Hill)  
Prof. Hung-wen Liu  
(University of Texas, Austin)  
Prof. K. C. Nicolaou  
(Scripps Research Institute)  
Prof. Xin-Sheng Yao  
(Shenyang Pharmaceutical University)  
Prof. Li-He Zhang  
(Peking University)

### Scientific Program Committee

#### *Chair:*

Prof. Chris C. K. Chang  
(HKUST)

#### *Members:*

Prof. Wei-Min Dai  
(HKUST)  
Prof. Xiao-Jiang Hao  
(Kunming Institute of Botany, CAS)  
Prof. Richard Haynes  
(HKUST)  
Prof. Hua-Liang Jiang  
(Shanghai Institute of Materia Medica, CAS)  
Prof. Sheng-Chu Kuo  
(China Medical College, Taichung)  
Dr. Shu-Kun Lin  
(Molecular Diversity Preservation  
International, Basel)  
Prof. Da-Wei Ma  
(Shanghai Institute of Organic Chemistry, CAS)  
Prof. Cherng-Chyi Tzeng  
(Kaohsiung Medical University)  
Prof. Mei-Xiang Wang  
(Institute of Chemistry, CAS)  
Prof. Hu Zheng  
(West China University of Medical Sciences)

### Organizing Committee

#### *Chair:*

Prof. Nancy Ip (HKUST)

#### *Deputy Chairs:*

Prof. Chi-Ming Che (HKU)  
Prof. Henry N. C. Wong (CUHK)

#### *Secretary-General:*

Prof. Wei-Min Dai (HKUST)

#### *Members:*

Prof. Chun-Tao Che (CUHK)  
Prof. Zhihong Guo (HKUST)  
Prof. Yifan Han (HKUST)  
Prof. Yung-Hou Wong (HKUST)  
Prof. Yun Dong Wu (HKUST)  
Prof. Hong Xue (HKUST)  
Prof. Dan Yang (HKU)  
Dr. Yu-Fong Yen (HKUST)  
Dr. Lam Lung Yeung (HKUST)  
Prof. Mingjie Zhang (HKUST)  
Prof. Guang Zhu (HKUST)

### IMPORTANT DATES

- Mailing of Second Announcement  
15 April 2002
- Submission of Abstracts  
30 June 2002
- Notification of Acceptance  
15 July 2002
- Deadline for Early Registration  
31 July 2002

## Scientific Program

The symposium will include plenary and invited lectures, oral and poster contributions, dealing broadly with topics in the following areas:

1. Bioorganic & medicinal chemistry and enzymatic reactions
2. Bioinformatics and computer-aid drug design
3. Combinatorial & solid-phase chemistry and high throughput screening
4. Discovery of novel molecular targets for drug action
5. Natural products and TCM as leads for drug discovery
6. New synthetic methodology and chirotechnology

### **Confirmed Speakers** (at the time of printing)

#### *Plenary Speakers*

Prof. Hung-wen Liu  
(University of Texas, Austin)  
*Title to be determined*

#### *Invited Speakers*

Prof. Ji-Wang Chern  
(National Taiwan University, Taipei)  
*Design and synthesis of potential DNA double and triple helices stabilizing agents*

Dr. Daniel T. W. Chu  
(Chiron Corporation, Emeryville)  
*Recent advance in macrolide antibiotic research*

Prof. Zong-Ru Guo  
(Institute of Materia Medica, CAMS, Beijing)  
*Design and synthesis of anti-diabetics based on PPAR-gamma structure and virtual screening of focused library*

Prof. Xiao-Jiang Hao  
(Kunming Institute of Botany, CAS, Kunming)  
*Bioactive compounds from Chinese medicinal plants*

Prof. Ziwei Huang  
(University of Illinois at Urbana-Champaign, Urbana)

*Protein-protein interactions: Mechanisms, medicinal chemistry, and implications for post-genomic drug discovery*

Prof. Hua-Liang Jiang  
(Shanghai Institute of Materia Medica, CAS, Shanghai)  
*Aspects of virtual screening in the cycle of drug discovery: Successful stories, prospects and challenges*

Prof. Xiaoyu Li  
(Shanghai Institute of Materia Medica, CAS, Shanghai)  
*Immunomodulating natural products from Chinese herbs*

Prof. Chun-Hung Lin (Hans)  
(Institute of Biological Chemistry, Academia Sinica, Taipei)  
*Synthesis of bioactive carbohydrates by glycosidic bond formation*

Prof. Guo-Qiang Lin  
(Shanghai Institute of Organic Chemistry, CAS, Shanghai)  
*Study on the synthesis of bioactive compounds by carbon-carbon bond formation*

Prof. Dawei Ma  
(Shanghai Institute of Organic Chemistry, CAS, Shanghai)  
*Design and synthesis of matrix metalloproteinase inhibitors*

Prof. Ben Shen  
(University of Wisconsin-Madison, Madison)  
*Natural product biosynthesis and prospects of engineering microorganisms for chemical structural diversity*

Prof. Tsann-Long Su  
(Institute of Biomedical Sciences, Academia Sinica, Taipei)  
*Development of DNA topoisomerase II-mediated anticancer agent: AHMA derivatives*

Prof. Cherng-Chyi Tzeng  
(Kaohsiung Medical University, Kaohsiung)  
*Synthesis and anticancer evaluation of furoquinolines*

Prof. Peng George Wang  
(Wayne State University, Detroit)  
*Carbohydrate-based drug development*

Prof. Yan-Guang Wang  
(Zhejiang University, Hangzhou)  
*Polymer-supported synthesis of heterocycles*

Prof. Zhen Xi  
(Nankai University, Tianjin)  
*DNA recognition and damage by small molecules at bulge site*

Dr. Jun Xu  
(Cheminformatics, Discovery Partners International, Inc., San Diego)  
*HTS data mining and virtual library analysis*

Prof. Zhen Yang  
(Peking University, Beijing)  
*Diversity-oriented synthesis and branched reaction pathway applied to natural product-like compounds*

Prof. Biliang Zhang  
(UMASS Medical School, Worcester)  
*High-throughput synthesis for anti-HIV and anticancer drug discovery*

Prof. Li-He Zhang  
(Peking University, Beijing)  
*Chemical syntheses and calcium release activities of N-1-glycosyl substituted cADPR mimics*

Local speakers will be solicited at a later stage.

## Preliminary Program

	<b>Saturday 28 December</b>	<b>Sunday 29 December</b>	<b>Monday 30 December</b>	<b>Tuesday 31 December</b>
9:00-10:15		Opening ceremony Plenary Lecture	Plenary Lecture Invited Lecture	Session 13 Invited Lectures
10:15-10:30		Tea break	Tea break	Tea break
10:30-12:10		Sessions 1 and 2 Invited Lectures Oral Presentations	Sessions 7 and 8 Invited Lectures Oral Presentations	Session 14 Invited Lectures  Closing ceremony
12:10-14:00		Lunch	Lunch	Lunch
14:00-15:30	Registration 14:00-21:00	Sessions 3 and 4 Invited Lectures	Sessions 9 and 10 Invited Lectures	Optional tours 13:00-17:00
15:30-15:50		Tea break	Tea break	
15:50-17:30		Sessions 5 and 6 Oral Presentations	Sessions 11 and 12 Oral Presentations	End of symposium
18:00-19:30	Welcome reception 18:30-21:00	Dinner	Banquet 18:00-20:00	
19:30-21:30		Poster Presentations		

Additional parallel sessions may be added at a later stage.

## Call for Contributions

All participants are invited to contribute a presentation in the scientific sessions. Most contributions will be as posters. However, the Scientific Program Committee will select a number of abstracts from the contributed papers to be presented as 20 min oral presentations. The presenting author for poster and/or oral contributions must be a registered participant.

### Abstract

Abstracts for ALL presentations (plenary and invited lectures, oral and poster presentations) will be included in the abstract book for ISCMC-2002. In order to guarantee inclusion of your contributions in the abstract book, a paid registration for ONE of the contributors must be made before the early registration deadline, 31 July 2002.

Selected papers from all contributions will be invited to submit a full manuscript for publication in a special issue for ISCMC-2002 in *Molecules*, an online journal of synthetic organic chemistry. However, publication of your work in *Molecules* is not a requirement for presentation at ISCMC-2002. Details will be released at the symposium web site:

<http://ihome.ust.hk/~chdai/ISCMC2002/program.htm>.

**Deadline for abstract submission is 30 June 2002.**

Authors will be notified about the acceptance of their papers by 15 July 2002.

For consistency, the following guidelines must be strictly adhered to:

- The abstract should be prepared in English (with both English and Chinese author names if preferred) and fit on ONE A4 page with 25 mm margins on all sides.
- The abstract should be printed out on white paper, ready for direct reproduction. ***In addition, electronic versions of abstracts***

***are strongly preferred.*** Please send to [iscmc@ust.hk](mailto:iscmc@ust.hk) as E-mail attachments.

- The abstract title should be in 14 point, boldface Times New Roman font.
- After one line space, the author's names should appear in 12 point Times New Roman font. The presenting author's name should be underlined.
- The authors' affiliations should follow in 12 point italicized Times New Roman font. Different affiliations can be indicated by the *Roman* alphabet in superscript form.
- There should be a single line space between the author's affiliation and the body of the abstract. The body of the abstract should be in 12 point Times New Roman font and single line spaced, with a line space between paragraphs.
- Structures and schemes should be prepared using a recent version of ChemDraw™. Preferences are given below:

Chain angle:	120 deg.
Bond spacing:	18% of width
Fixed length:	14.4 pt
Bold width:	2.0 pt
Line width:	0.6 pt
Margin width:	1.6 pt
Hash spacing:	2.5 pt
Font:	Arial/Helvetica
Size:	10 pt
Tolerances:	3 pixels
- References cited should appear in 10 point Times New Roman font at the end of the abstract. The format for references should follow that of the ACS; see a recent issue of *J. Org. Chem.* for details.

Please mail two copies of the abstract to the Symposium Secretariat at the address found on page 9.

### Oral and Poster Presentations

The presenting authors will be notified the details of presentation methods.

### Exhibition

Booths are available for a trades display. Please contact [iscmc@ust.hk](mailto:iscmc@ust.hk) for details.

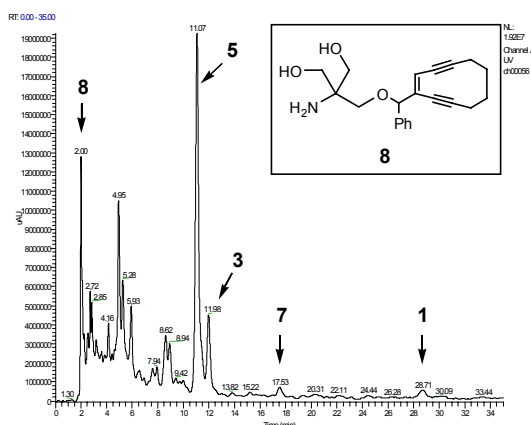
## DNA Cleavage Potency, Cytotoxicity, and Mechanism of Action of a Novel Class of Eneidyne Prodrugs

Wei-Min Dai,<sup>\*a</sup> Kwong Wah Lai,<sup>a</sup> Anxin Wu,<sup>a</sup> Wataru Hamaguchi,<sup>a</sup> Mavis Yuk Ha Lee,<sup>a</sup> Ling Zhou,<sup>b</sup> Atsushi Ishii,<sup>b</sup> and Sei-ichi Nishimoto<sup>b</sup>

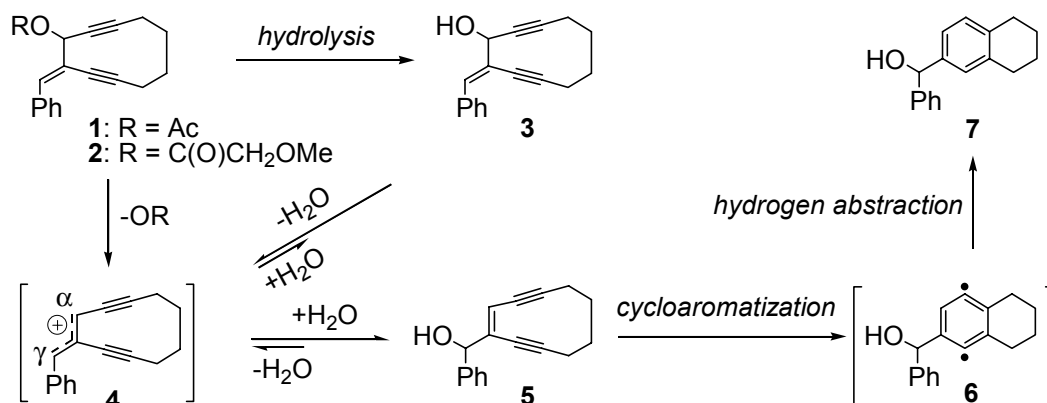
<sup>a</sup>Department of Chemistry, The Hong Kong University of Science and Technology, Clear Water Bay, Kowloon, Hong Kong SAR, China

<sup>b</sup>Department of Energy and Hydrocarbon Chemistry, Graduate School of Engineering, Kyoto University, Sakyo-ku, Kyoto 606-8501, Japan

We have discovered a novel class of (*E*)-3-acyloxy-4-(arylmethylidene)cyclodeca-1,5-diyne such as **1** and **2** which exhibit promising enediynes-like DNA cleavage and cytotoxic activities.<sup>1</sup> LC-MS analysis of the incubation mixture of **1** (pH 8.5, 37 °C; Figure 1) confirmed formation of 10-membered ring enediynes **5** presumably via an allylic cation **4** and suggested that 1,4-benzenoid diradical **6** might be one of the active species for DNA damage and cytotoxicity. The proposed mechanism of action is given in Scheme 1.



**Figure 1.** LC/MS data of the incubation mixture of **1** (MS charts not showed).



**Scheme 1.** Proposed mechanism of action of **1** and **2**.

1. Dai, W.-M.; Lai, K. W.; Wu, A.; Hamaguchi, W.; Lee, M. Y. H.; Zhou, L.; Ishii, A.; Nishimoto, S. *J. Med. Chem.* **2002**, *45*, 758-761.

## General Information

### Visas Requirements

Please check the website of the Immigration Department of Hong Kong SAR Government if you need a visa to enter Hong Kong. Visa applications may be submitted to Chinese diplomatic and consular missions nearest to the applicants' place of residence. The normal processing time for a visa application that requires reference to the Immigration Department of Hong Kong SAR Government is 4 to 6 weeks.

*Address:* Immigration Department, 2/F Immigration Tower, 7 Gloucester Road, Wan Chai, Hong Kong  
Tel. (852) 2824 6111  
Fax: (852) 2877 7711  
Website:  
<http://www.info.gov.hk/immd/english/topical/e/1.htm>

### Invitation Letter for Applying Travel Document

If you need an invitation letter issued by the symposium organizer for applying your travel document to Hong Kong, please tick the relevant box in the section of Personal Details of the Registration Form. However, no financial assistance or obligation on the part of the symposium organizer is implied. All registered contributing authors will be provided a similar letter upon notification of acceptance of your abstracts.

### Hong Kong International Airport

#### *Airport Express (AEL)*

This high-speed rail service takes passengers from the airport to Hong Kong Station in the Central business district in just 23 minutes, including two stops on route. HK\$90 per single journey.

ISCMC-2002 delegates should get off at the Kowloon station and hire a taxi from there to HKUST. It costs about HK\$150. See the HKUST location map for detail.

### *Taxi*

Metered taxis are reasonable. Rates start at HK\$15.00 on flag fall plus HK\$1.40 every further 250 meters. Taxis only accept HK\$, only pay the fare shown on the meter plus any additional charges when applicable (e.g. luggage, tunnel tolls).

All passengers pay an extra fee per piece of luggage (charges displayed in taxi). The estimated fare and distance from the airport to HKUST is around HK\$350 including tolls (~40 km). All taxis must produce a receipt for the paid fare. Take a receipt for your record when leaving the taxi.

### *Airport Departure Tax*

Adults (12 years and over): HK\$50 (airport tax is usually included in the air ticket price). Children (under 12 years): Free. The tax is collected at the airline check-in counters in the departure hall.

### Transportation to Symposium Venue

The symposium will be held in the Academic Building on the campus of HKUST. Taxi can stop in front of the Atrium in the Piazza. Bus stops are located in front of the Main Entrance. Please follow the ISCMC-2002 sign to the registration desk in the Concourse of the Academic Building. Refer to the location and campus maps of HKUST for details.

#### *Address:*

The Hong Kong University of Science and Technology, Clear Water Bay, Kowloon, Hong Kong. Tel. 2358-7359 (Chem Dept). You can show the following Chinese address for asking direction.

**香港九龍清水灣道香港科技大學  
(西貢方面)**

#### *From Hung Hom Railway Terminal*

The most convenient way for traveling to HKUST is by taxi, especially when you come in a group. The estimated fare is around HK\$150. Connections from



Hunghom to HKUST by the underground Mass Transit Railway (MTR) and buses are available at lower cost. However, it will take much longer time and needs several connections.

#### *From Lo Wu Railway Terminal*

Make stop at Kowloon Tong railway station and transfer to the underground Mass Transit Railway (MTR). Get off at Diamond Hill and take **91M** or **91** bus to HKUST. Another convenient option is to hire a taxi from Kowloon Tong to HKUST. It costs about HK\$120.

#### **Language**

The Cantonese dialect and English are the official languages in Hong Kong, though the use of Mandarin is growing. Most people in the service industry speak English quite fluently.

#### **Climate**

The late December weather in Hong Kong is the most pleasant with daily average temperatures ranging between 12-18 °C for 2001.

#### **Health**

Vaccination certificates are not required for yellow fever, cholera and typhoid for visitors traveling to Hong Kong. However, you are advised to check with your doctor well before departure as requirements can change without prior notice.

#### **Currency**

The Hong Kong Dollar (HK\$) is the unit currency used in Hong Kong. The official exchange rate of Hong Kong dollar to US dollar is 7.80 (subject to fluctuation). Most foreign currencies and traveler's checks can be changed over banks, hotels and moneychangers. Major credit cards are accepted in Hong Kong. There are no restrictions on the type or amount of money that can be brought into or taken out of Hong Kong.

#### **IDD**

Regional code for Hong Kong is “852” immediately followed by the local telephone number. However, if you are making a call to other cities in the Chinese Mainland, you should dial the country code “86” then followed by the area code and the local telephone.

#### **Electricity**

Electricity is supplied as alternating current and the voltage is 200/220 Volts/frequency 50 cycles.

#### **Public Transport**

Hong Kong is so compact, getting around is quite easy. Fleets of taxis, buses, trams, harbor ferries, complemented by the excellent Mass Transit Railway (MTR) underground system, enable visitors to explore Hong Kong on their own safely and conveniently.

#### **Smoking Policy**

It is smoke-free zone in all symposium and exhibition rooms.

#### **Personal Property**

Please take good care of your personal belongings. Do not leave them unattended. Neither the organizer nor staff from the venue will be responsible for any loss or damage of your personal property.

#### **Insurance and Liability**

The organizer does not accept responsibility for any individual, medical, travel or personal insurance. Delegates are advised to secure their own insurance policies as necessary.

#### **Disclaimer**

The information contained in this brochure is correct at the time of printing. The symposium organizer reserves the right to alter or delete items from the symposium or social program. The organizers shall not be liable for any cost or damage arising from any action based on the information in this brochure.

## *Registration*

### **Registration Fees and Form**

Several categories of registration fees are available. Non-Hong Kong participants are recommended to take the advantage of FULL registration. It covers all symposium materials, reception, banquet, meals, and teas. See the Registration Form for details.

Each participant should complete one copy of the Registration Form and return it to the Symposium Secretariat at the address showed on the form by E-mail/fax for credit card payment or by airmail for check payment. Accompanying person may use the same copy of the Registration Form. The electronic version of the Registration Form is also available at:

<http://ihome.ust.hk/~chdai/ISCMC2002/program.htm>.

The early registration deadline is 31 July 2002. A late fee at 10% of the early registration fee applies after 31 July 2002.

### **Cancellation Policy**

Registration cancellation should be notified in writing to the symposium organizer. Cancellation received before 28 November 2002 will receive a refund less 20% administration fee. No refunds will be made for cancellation received after that date.

### **Registration Desk**

Registration desk will open on 28 December 2002 starting 14:00 pm in the Academic Building, HKUST. Participants can pick up the badges, symposium materials, and room keys at the registration desk. Please report to the registration desk after arriving at HKUST.

## *Accommodation*

All participants are expected to live on the HKUST campus. Refer to the Registration Form for information on the types and

rates of rooms. More information on accommodation, restaurants and canteens, and commercial outlets on the HKUST campus is found at:

<http://www.ab.ust.hk/cso/index.htm>.

## *Social Events*

### **Welcome Reception**

28 December 2002, 18:30-21:00 pm in the Academic Building. Attendance at the welcome reception is included in ALL registration fees.

### **Symposium Banquet**

30 December 2002, 18:00 pm on HKUST campus. Attendance at the symposium banquet is included in the FULL registration fee, student registration fee, and accompanying person registration fee. Extra tickets may be purchased on site.

## *Optional Tours*

A guided tour of Hong Kong will be arranged in the afternoon of 31 December 2002. Information and bookings for local tours and attractions will be available during the symposium from a tour desk located adjacent to the registration desk.

## *Contact Information*

Symposium Secretariat  
ISCMC-2002  
c/o Prof. Wei-Min Dai  
Department of Chemistry  
HKUST, Clear Water Bay, Kowloon  
Hong Kong SAR, China

Tel. +852-2358-7365

Fax: +852-2358-1594

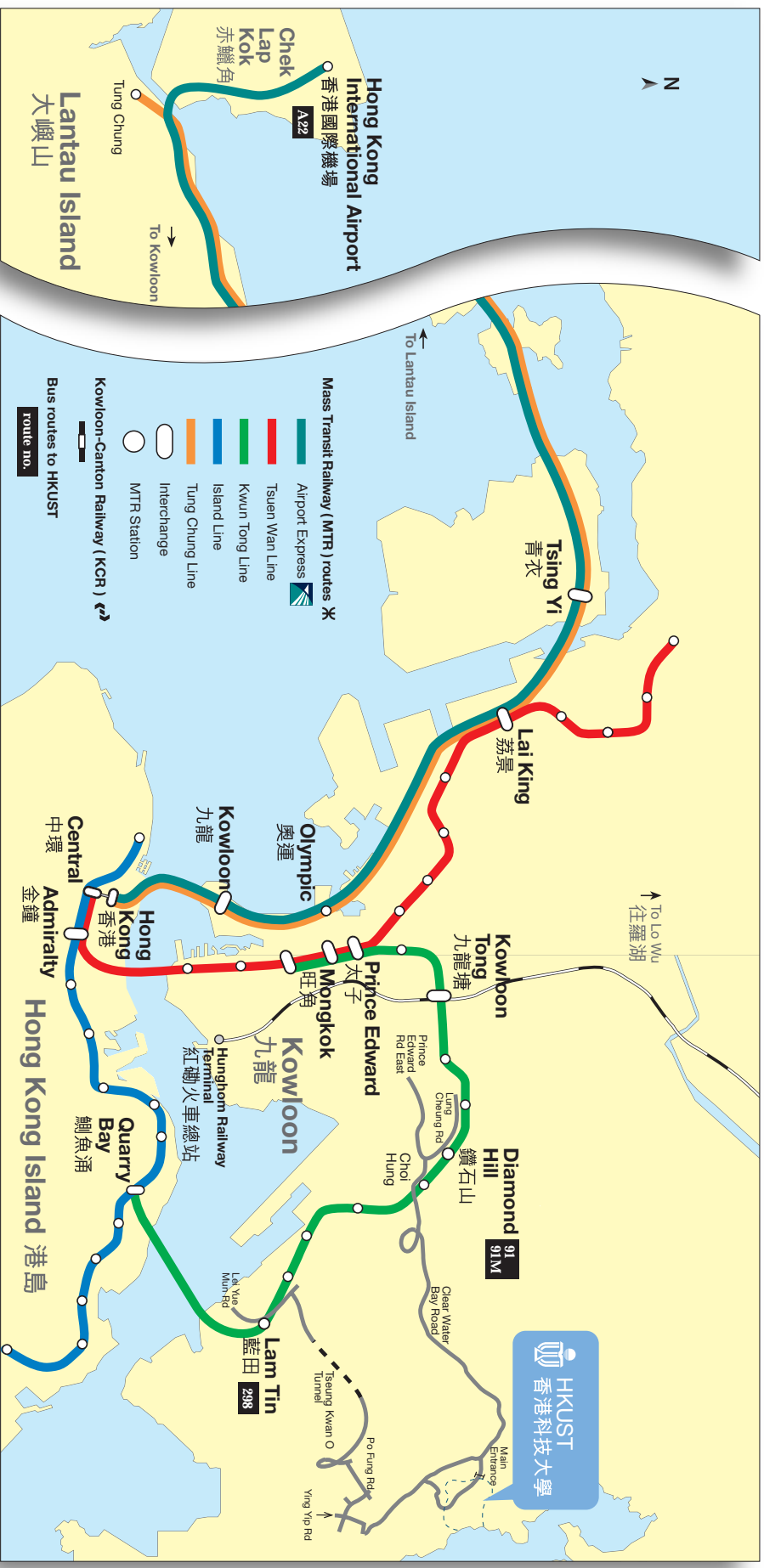
E-mail: [iscmc@ust.hk](mailto:iscmc@ust.hk)

Website:

<http://ihome.ust.hk/~chdai/ISCMC2002/program.htm>.

# LOCATION MAP

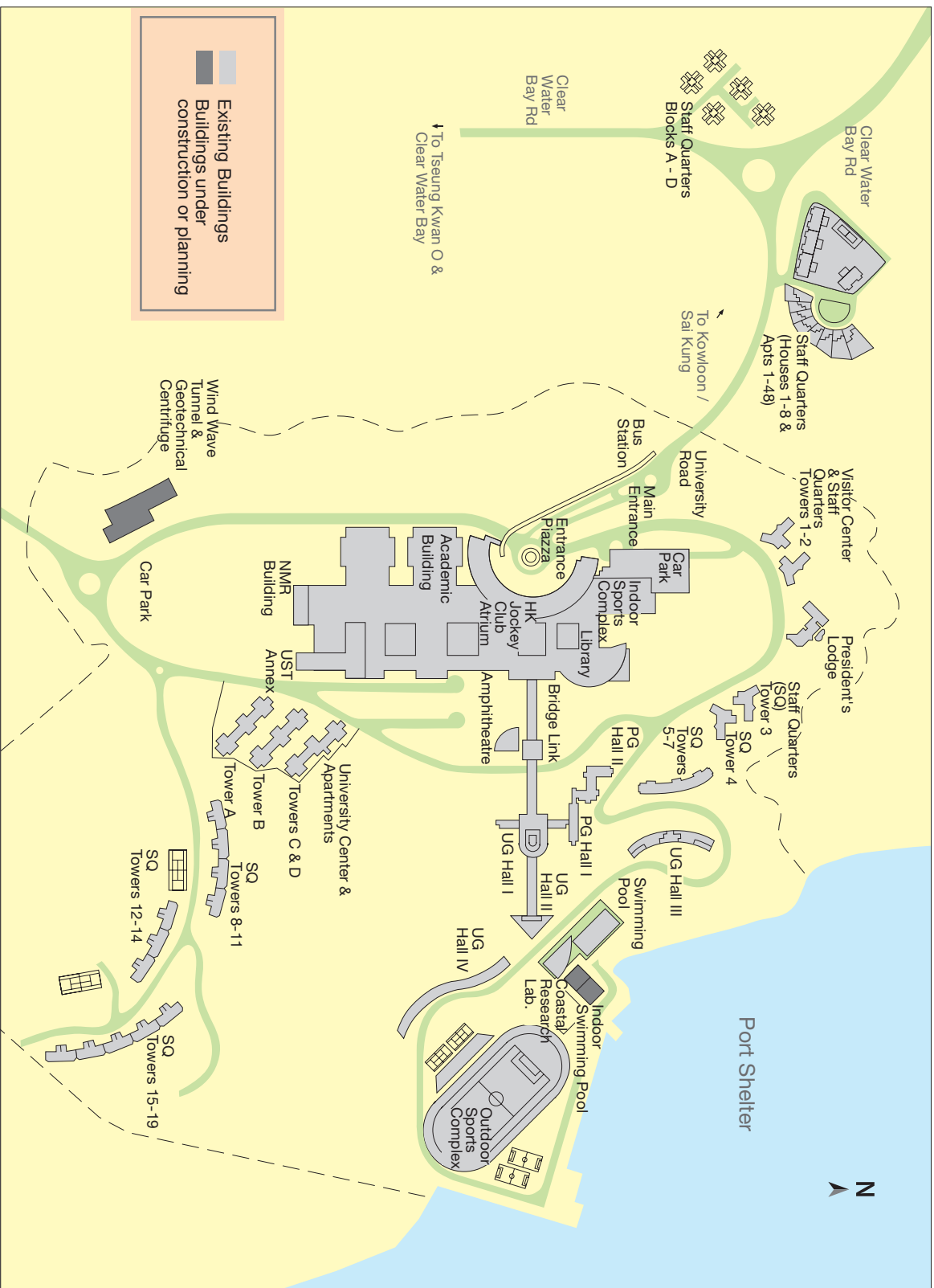
## THE HONG KONG UNIVERSITY OF SCIENCE AND TECHNOLOGY

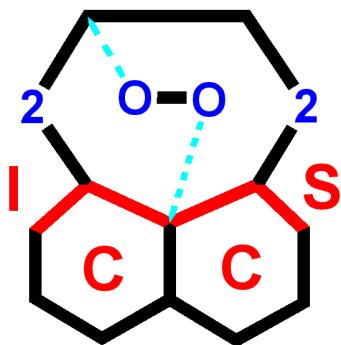


Hints for transportation from airport to HKUST:  
 For passengers with bulky luggage, taking a taxi to HKUST direct is recommended.  
 Those with simple luggage may take Airport Bus A22 to Lam Tin, and change for Bus 298 or taxi to HKUST.

# CAMPUS MAP

## THE HONG KONG UNIVERSITY OF SCIENCE AND TECHNOLOGY





**ISCMC-2002**

*The Third International Symposium  
for Chinese Medicinal Chemists*

## Registration Form

28-31 December 2002

The Hong Kong University  
of Science and Technology  
Hong Kong SAR, China

Please complete and return to:  
Symposium Secretariat  
ISCMC-2002  
c/o Prof. Wei-Min Dai  
Department of Chemistry  
HKUST, Clear Water Bay, Kowloon  
Hong Kong SAR, China



Tel: +852-2358-7365  
Fax: +852-2358-1594  
E-mail: [iscmc@ust.hk](mailto:iscmc@ust.hk)  
Website: <http://ihome.ust.hk/~chdai/ISCMC2002/program.htm>

***The early registration deadline is 31 July 2002.  
Deadline for abstract submission is 30 June 2002.***

### Personal Details:

Title:  Prof.  Dr.  Mr.  Ms.  Miss (double click the box and tick the default value checked box)

Family Name: \_\_\_\_\_ First Name: \_\_\_\_\_ [Chinese Name: \_\_\_\_\_]

Institution/Organization: \_\_\_\_\_

Address: (postal preferred) \_\_\_\_\_

Tel: \_\_\_\_\_ Fax: \_\_\_\_\_ E-mail: \_\_\_\_\_

Check the box(es)  If you are presenting an abstract  If you need an invitation letter  
(double click the box and tick the default value checked box)

### A. Registration Fees (double click the box below and tick the default value checked box) (1 US\$ ≈ 7.8 HK\$)

**Full Registration Fee:** **HK\$2,000** HK\$ \_\_\_\_\_  
(include welcome reception, morning and afternoon teas, meals, banquet, and abstract book)

**Full Registration Fee with lunches only:** **HK\$1,600** HK\$ \_\_\_\_\_  
for local participants if preferred  
(include welcome reception, morning and afternoon teas, lunches, and abstract book)

**Student Registration Fee:\*** **HK\$1,000** HK\$ \_\_\_\_\_  
(include welcome reception, morning and afternoon teas, meals, banquet, and abstract book)

**Student Registration Fee without meals:\*** **HK\$500** HK\$ \_\_\_\_\_  
for local students if preferred  
(include welcome reception, morning and afternoon teas, and abstract book)

**Accompany Person Registration Fee:** **HK\$500** HK\$ \_\_\_\_\_  
(include welcome reception, morning and afternoon teas, meals, and banquet)

Family Name: \_\_\_\_\_ First Name: \_\_\_\_\_ [Chinese Name: \_\_\_\_\_]

**Daily Registration Fee with lunch only:** **HK\$500** HK\$ \_\_\_\_\_  
(include one day morning and afternoon teas, lunch, and abstract book)

Day of attending:  Sunday  Monday  Tuesday

**This is TOTAL A:**

HK\$ \_\_\_\_\_

*\*Students must provide a letter from their supervisors confirming their status*

**B. Accommodation Fees** (double click the box below and tick the default value checked box)

Date of arrival: \_\_\_\_\_ Date of departure: \_\_\_\_\_

No. of nights: \_\_\_\_\_

**Visitor Center in Tower II**

- Single room in Visitor Center# HK\$440/night HK\$ \_\_\_\_\_  
 Twin room in Visitor Center (good for two persons)# HK\$560/night/room HK\$ \_\_\_\_\_  
 Suite in Visitor Center (for couples/families)# HK\$680/night/room HK\$ \_\_\_\_\_

**# Limited number of rooms available; Room will be assigned on the first-come-first-served basis.**

**Serviced Apartments in University Center, Tower C**

- Large single room in Apartment HK\$440/night HK\$ \_\_\_\_\_  
 Small single room in Apartment HK\$300/night HK\$ \_\_\_\_\_  
 Shared large room in Apartment\* HK\$300/night HK\$ \_\_\_\_\_  
 Shared large room in Apartment using extra bed\* HK\$140/night HK\$ \_\_\_\_\_

\*Sharing large room in Apartment with: \_\_\_\_\_  or Assigned by organizer

**Student Halls**

- Twin-bed room (maximum for two persons) HK\$160/night/person HK\$ \_\_\_\_\_

Sharing with: \_\_\_\_\_  or Assigned by organizer

- Triple room (maximum for three persons) HK\$110/night/person HK\$ \_\_\_\_\_

Sharing with: \_\_\_\_\_ and \_\_\_\_\_  or Assigned by organizer

**This is TOTAL B:** HK\$ \_\_\_\_\_

**Note: All rates quoted above may be subject to a slightly annual adjustment.**

**Accommodation must be reserved before the early registration deadline (31 July 2002).**

**Accommodation fees MUST be paid on submitting the Registration Form. Reservation submitted after 31 July 2002 is not guaranteed. Cancellation of accommodation before 28 Nov 2002 in writing will receive a refund less one night room charge. No refund will be made after 28 Nov 2002.**

**Payment (Payments must be made in HK dollars)**

<b>A. Registration Fee</b>	HK\$ _____
<b>B. Accommodation Fee</b>	HK\$ _____
<b>C. Late Fee at 10% of the early registration fee after 31 July 2002</b>	HK\$ _____
<b>TOTAL PAYMENT DUE</b>	<b>HK\$ _____</b>

(double click the box below and tick the default value checked box)

- Check or Bank Draft (*please make payable to The Hong Kong University of Science and Technology*)

Name of Drawer: \_\_\_\_\_

**Please send the check/bank draft together with this registration form/abstract to the Symposium Secretariat.**

OR (double click the box below and tick the default value checked box)

- Visa  Mastercard

Card number: \_\_\_\_\_ Name of Cardholder: \_\_\_\_\_

Card expiry date: \_\_\_\_\_ Signature: \_\_\_\_\_ Date: \_\_\_\_\_

**A confirmation letter and accommodation information will be sent to you.  
WE SUGGEST YOU KEEP A PHOTOCOPY OF YOUR COMPLETED FORM.**

*Sponsored by*

Department of Chemistry, HKUST

**COVER LOGO:**

The logo was designed on the basis of the molecular skeleton of the antimalarial drug, Qinghaosu (artemisinin) isolated from *Artemisia annua*. The logo features a cartoon boy wearing a pair of 2002 glasses (the blue peroxy moiety) and a read-colored ISCMC jacket.